



BUILDING *together*

PREVENTION IN PARTNERSHIP



RHODE ISLAND FAMILY RESOURCE GUIDE
Strengthen your support system. Connect to free resources.



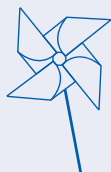
CHILD & FAMILY SUPPORT

learn more at psnri.org/support or call warm line at 401-467-6855



group for parents, caregivers, and grandparents to make connections and share support (children are welcome)

if you're pregnant and using, there are steps you can take now to protect yourself and your baby. Without judgement.



Peer Support

family support partners work with family members to support your child and family needs

Parent Support Groups

RI Fatherhood Initiative
psnri.org/fatherhood



fatherhood group ranges from teen fathers to grandfathers all coming together to share experiences and learn from each other

Healing Mother & Baby
psnri.org/help or psnri.org/ayuda

Nurturing Parenting
family-centered trauma-informed 12-week course designed to build nurturing parenting skills



**RENT
CAR PAYMENT
CHILD CARE
DEBT
INSURANCE
UTILITIES
CLOTHING
FOOD
FAMILY**



Prevent Child Abuse
Rhode Island™



Early Childhood FREE Resources

-  **First Connections**
Pregnant people, families, and caregivers with children up to age 3.
-  **Healthy Families America**
Pregnant people and families with infants or young children up to age 4.
-  **Nurse-Family Partnership**
First-time pregnant people that are less than 28 weeks pregnant up until the child turns 2.
-  **Parents as Teachers**
Pregnant people and parents with children up to age 4 (some programs up to age 5).

RI Family Support FREE Resources

Parent Support Network of RI
535 Centerville Rd, Ste 202, Warwick
401-467-6855 warm line
www.psnri.org

RI Parent Information Network
300 Jefferson Blvd, Ste 300, Warwick
401-270-0101
www.ripin.org

MLK Community Center
20 Dr. Marcus Wheatland Blvd, Newport
401-846-4828
www.mlkccenter.org

The Providence Center
528 North Main St, Providence
401-276-4020
www.providencecenter.org

Progreso Latino
626 Broad St, Central Falls
401-728-5920
www.progresolatino.org


Newport Conexion Latina
528 North Main St, Providence
401-276-4020
www.providencecenter.org

Thrive Behavioral Health
528 North Main St, Providence
401-276-4020
www.providencecenter.org



Over 30 years serving RI with
family peer support dedicated to
behavioral health.

 psnri.org

 401-467-6855

Family Care Community Partnerships

Child & Family

31 John Clarke Rd, Middletown
401-849-2300
www.childandfamilyri.com
24/7 Emergency Services

Communities for People

210 West Ave, Pawtucket
833-322-7123
www.communities-for-people.org
24/7 Emergency Services

Family Service of RI

134 Thurbers Ave, Providence
401-519-2280
www.familyserviceri.org

Tri-County Community Action Agency

1935 Kingstown Rd, Wakefield
401-789-3016
www.tricountyri.org

Community Care Alliance

800 Clinton St, 2nd Floor, Woonsocket
401-235-7252
www.communitycareri.org

Local 24/7 CRISIS Support

TIDES

Children's Mobile Crisis Response
401-822-1360

FSRI

Children's Mobile Crisis Hotline
401-854-6678

Kids Link RI

Children's Behavioral Health
Triage and Referral
1-855-543-5465

BH Link

Adult Behavioral Health
Triage and Referral
988

BUILDING together PREVENTION IN PARTNERSHIP



Building STRONG FAMILIES¹



Positive Parenting Practices

- Increased parental confidence
- Increased positive parent-child interactions
- Increased home quality and safety



Child Maltreatment Outcomes

- Improves child safety
- Prevents maltreatment
- HFA parents use **more positive discipline** and less physical punishment and yelling
- Recurrence of maltreatment was **reduced by 1/3**



Economic Self- Sufficiency

- HFA moms were **5x more likely** to enroll and participate in school and training programs
- Teen HFA moms were **twice as likely** to complete at least one year of college compared to those not receiving HFA
- **27% fewer** families were homeless



Maternal Health

- HFA moms show **lowered parenting stress**
- **Increased** mothers' mental health
- **Increased** avoidance of risky behaviors



Child Health & Development

- **48% decrease** in low-birth-weight birth rates among moms who enrolled prenatally
- **26% fewer** children receive special education services



Family Violence

- **30% fewer** intimate partner violence incidents leading to injury

1. Healthy Families America. Evidence of Effectiveness. (2022). Available from <https://www.healthyfamiliesamerica.org/our-impact/evidence-of-effectiveness/>

**CHILDHOOD
ADVERSITY IS
~~INEVITABLE~~
PREVENTABLE.**



Prevent Child Abuse
Rhode Island™



**RESOURCES
ARE AVAILABLE**



Healthy Family America Rhode Island Sites

Healthy Families America is the signature home visiting program of Prevent Child Abuse America.

BVCAP

Pawtucket
401-723-4520
www.bvcap.org

Children's Friend

153 Summer Street, Providence
1-800-286-2901
www.cfsri.org

Community Care Alliance

Woonsocket
401-235-7000
www.communitycareri.org

CCAP

311 Doric Ave, Cranston
401-467-9610
www.comcap.org

EBCAP

East Providence and Newport
401-437-1000, ext 1535
www.ebcap.org

Family Service of RI

West Warwick and Providence
401-519-2280
www.familyserviceri.org

Meeting Street

1000 Eddy St, Providence
401-533-9100
www.meetingstreet.org

Parent

SUPPORT TIP

Call 401-467-6855 to speak to a family support partner -- someone with lived experience navigating children's behavioral health.